



**A 6-week immersive learning journey for congregations to craft powerful responses to pressing community needs.**

## Overview

Community Craft seeks to embody faithful and committed Christian witness amid contexts that are changing; to build bridges across divides in the church, academy, and society; and to foster interdisciplinary collaboration to address complex issues.

The Community Craft Collaborative will engage a local cohort of congregational leaders, lay and ordained, to participate in a hands-on, peer-learning experience that will nurture faith-inspired imagination alongside faith-informed action.

Convened by the Ormond Center at Duke University, this experiential team learning journey will consist of an intensive week and six weekly sessions intentionally curated to catalyze the new mindsets, competencies, and tools congregational leaders will need to:

**EVALUATE** the strengths and challenges of their unique context and place.

**UNDERSTAND** how different aspects of social life influence each other in expected and unexpected ways.

**IDENTIFY** new solutions and creative partnerships to address pressing local challenges.

**BUILD** unusual coalitions that strengthen the social fabric and foster the common good.

## Cohort THE COLLABORATIVE WILL INCLUDE—

- 4-6 Local congregations
- 4-6 Leaders from each congregation, Ordained and Lay
- Kick-off intensive, six weekly sessions and celebration project pitch event.
- Development of an actionable, redemptive response to community challenges that leverages congregational and community assets.
- The opportunity to receive seed funding for their venture.
- Interdenominational collaboration, learning, and relationship building.
- Comprehensive learning experience through the Community Craft curriculum.
- Training and use of high-impact toolkit including practices like community asset mapping, empathy mapping, congregational strengths assessment and more.

## Congregations CRITERIA FOR SELECTING CONGREGATIONS —

- ONE** | Congregational readiness to (re) assess and (re)imagine existing and future ministries through the lens of the Human Ecology Framework
- TWO** | Congregational readiness to (re) assess current mindsets, competencies, and tools needed to engage in God’s Call to Shalom within their local context
- THREE** | Commitment from at least (4) lay and clergy leaders to participate in every aspect of the collaborative
- Assemble a Local Impact Team of at least 4-6 congregational leaders/members (lay or ordained)
- Complete all assignments in a timely manner throughout the multi-week experience
- Participate in convenings and weekly sessions crafted as learning laboratories to foster teamwork, experiential learning, and leadership development
- Identify at least one local challenge and advance at least one concrete local response that will grow the thriving of their community;
- Provide updates on progress and lessons learned

Questions about this project?  
Get in touch.

[ORMONDCENTER.ORG/JOIN-THE-COLLABORATIVE](http://ORMONDCENTER.ORG/JOIN-THE-COLLABORATIVE)





## Outputs & Outcomes

### THE COLLABORATIVE WILL –

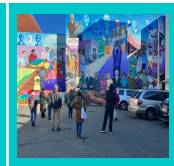
- Prepare congregations for engagement with community partners;
- Foster opportunities for shared learning and collaboration between congregations;
- Create opportunities to engage funding and strategic partners in these community-led efforts;
- Provide potential opportunities for Duke students and faculty members to engage in this work for mutually beneficial experience and scholarship;
- Amplify the visibility of this work nationwide through case studies and stories.

### AT THE END OF THE COLLABORATIVE, EACH CONGREGATION WILL HAVE –

- A variety of tools and skill sets that can be used throughout a lifetime of ministry and practice to better understand, articulate, and map their current context;
- An expanded understanding of Christian discipleship, congregational mission, and faithful witness within community;
- A pitch project where participants use the fruit of their ideation and training to move towards a clearly defined and implementable concept that will bless their community (feedback and evaluation will be provided);
- Connections to stakeholders and strategic partners to help move the project forward;
- Collaborative relationships among the other participating cohort congregations that will be cultivated through alumni programming.

# Apply today.

[ORMONDCENTER.COM/JOIN-THE-COLLABORATIVE](http://ORMONDCENTER.COM/JOIN-THE-COLLABORATIVE)



## About

### NC THRIVES AT THE ORMOND CENTER

The Ormond Center at Duke Divinity School fosters the imagination, will, and ability of congregations and communities to be agents of thriving. Ormond’s unique set of design methodologies and community engagement practices helps congregations and communities seek transformation. We seek to foster an NC-Based ecosystem of people, congregations, and communities working together to build healthy, resilient, enterprising, and just (thriving) communities in the face of our most urgent challenges and emergent opportunities through the research, practice, and relationship.

### CONTACT

**ELIZABETH HOWZE**  
[Ehowze@div.duke.edu](mailto:Ehowze@div.duke.edu)

*Questions about this project?*

**Get in touch.**

[ORMONDCENTER.ORG/JOIN-THE-COLLABORATIVE](http://ORMONDCENTER.ORG/JOIN-THE-COLLABORATIVE)

